

Please submit a consultation via the online Advertisement Licensing System for an accurate assessment of the signboard/ advertising sign chargeable area.

Examples of signboard/ advertising sign computation for chargeable area:

a) Banners/ Stickers



b) Lighbox



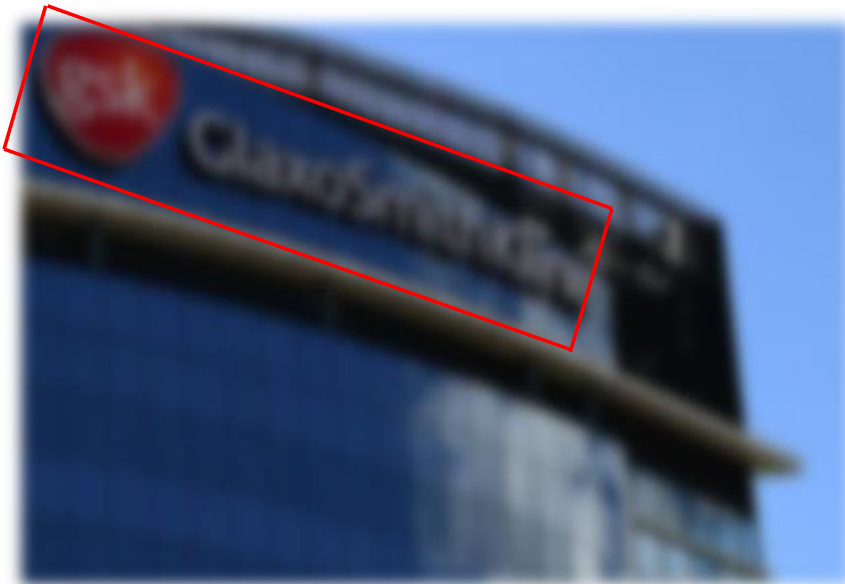
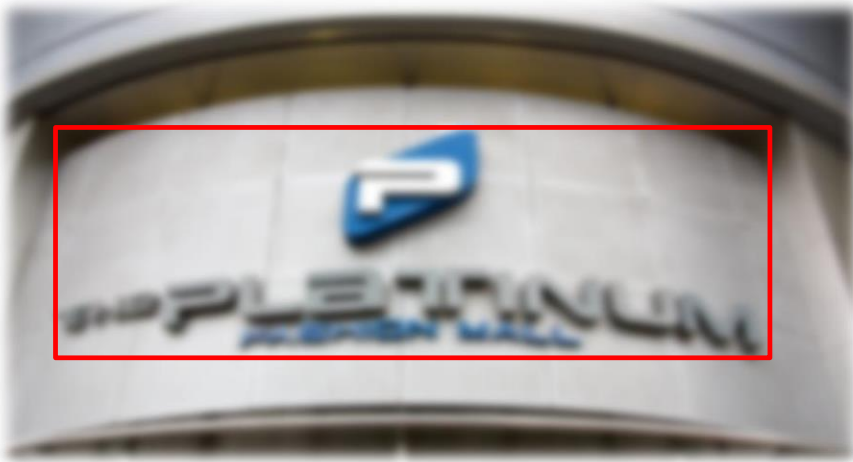
c) Sign with frame/ backing



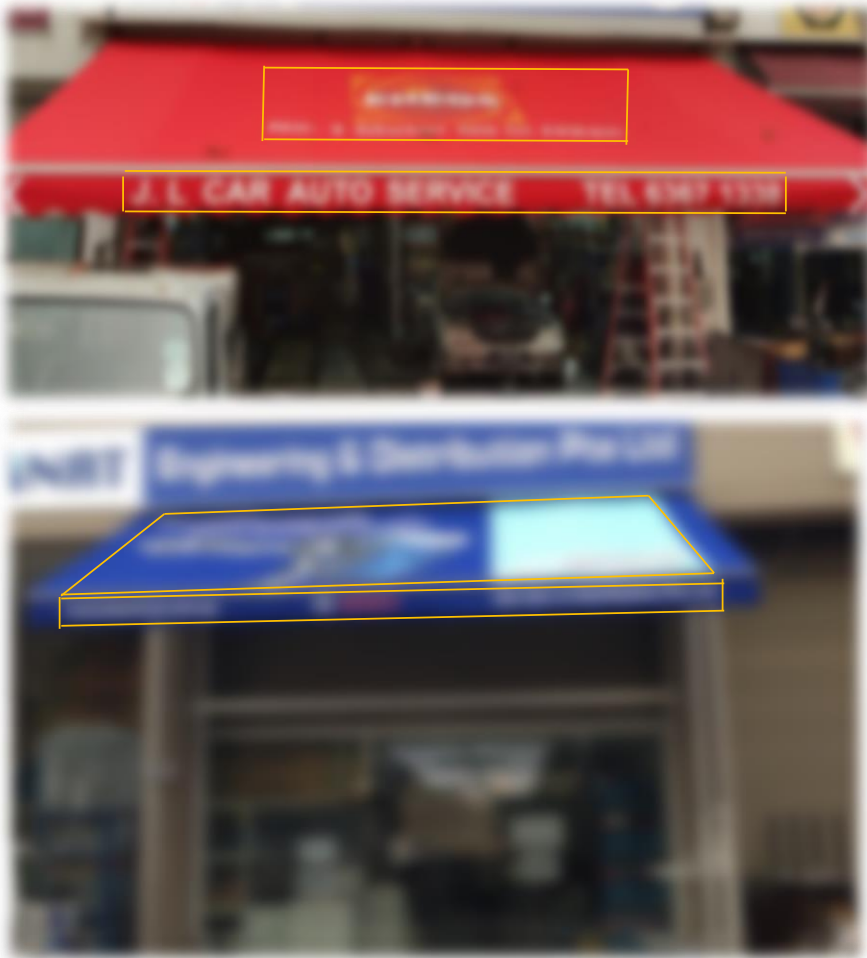
d) Sky sign



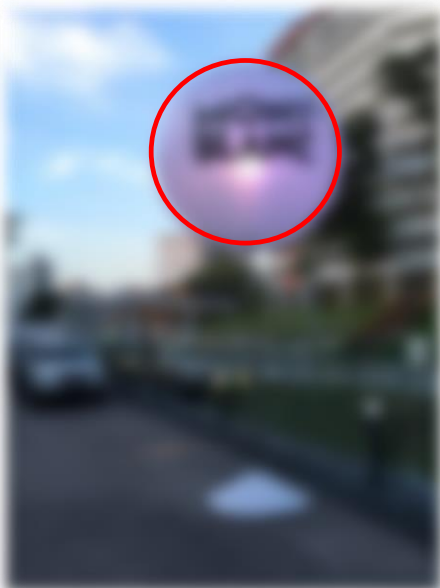
e) Individual lettering mounted directly on wall



f) Awning and canopy



g) Balloon sign [sphere formula = $(4 \times 3.14 \times r^2 \times r)$]



h) Free-standing sign/ directional sign

